

Staff Research Interests

March 2018

Department of Clinical Sciences

Department of Life Sciences

PREFACE

I am delighted that the College's research strengths are being showcased in this booklet. Our three College Research Centres (the Centre for Human Performance, Exercise and Rehabilitation, the Centre for Cognitive Neuroscience and the Centre for Culture and Evolution) provide a focus for disciplinary research activities within the College alongside actively supporting the multi-disciplinary research activities of the Institutes (particularly the Institute of Environment, Health and Societies).

The College continues to focus on:

Increasing research grant income

Increasing the number of postgraduate research students

Promoting research with impact and engaging in knowledge exchange activities

Ensuring the public value of our research is promoted

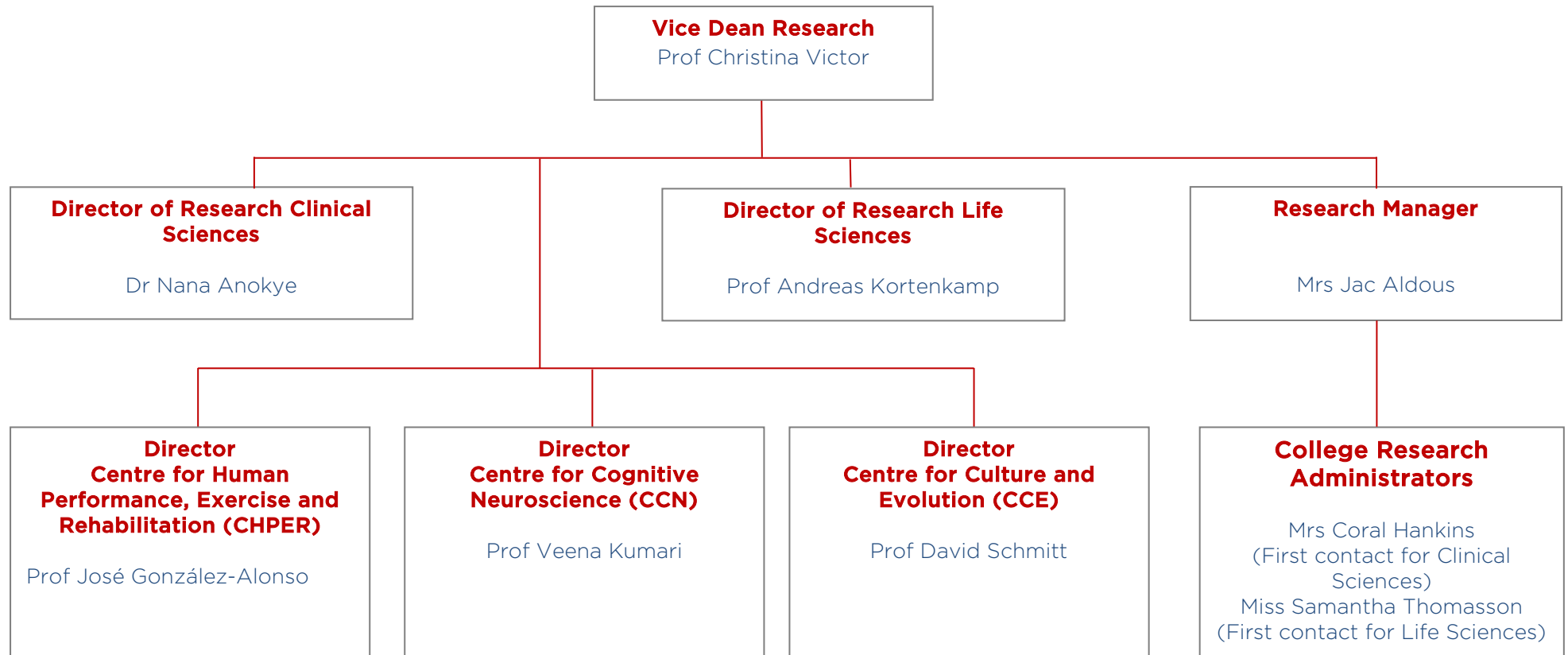
Professor Paul Hellewell, Dean of College of Health and Life Sciences.

In my role as Vice Dean for Research in the College of Health and Life Sciences it is my great pleasure to have this opportunity to showcase the range of research interests demonstrated by our staff. The breadth of our research is illustrated in a number of different ways. Our research activities span the life course including studies of children, young and older adults; encompass those in good health, elite performers and those with both acute and chronic health problems. Our studies embrace both fundamental and applied research and we have an established track record of undertaking research with impact as exemplified by our research that aims to enhance professional practice and the development and evaluation of services. A key feature of much of our research is our active involvement with key stakeholders including both professional bodies, policy makers and practitioners but also our local communities and user groups.

Research in our College is underpinned by our strong portfolio of externally funded projects, publications in high impact journals and externally recognised by our strong performance in the 2014 REF. I hope that this booklet, in which colleagues provide a summary of their research interests, demonstrates the vibrancy and breadth of our research. As a College we bring together a range of disciplines and I hope that this booklet will help you find colleagues with whom you share research interests and which will foster new collaborations and projects.

Professor Christina Victor, Vice Dean Research, College of Health and Life Sciences

College of Health and Life Sciences



Contents

Department of Clinical Sciences.....	5
Division of Occupational Therapy and Community Nursing.....	5
Division of Physiotherapy & Physician Associate.....	7
Division of Social Work.....	11
Division of Health Sciences.....	12
Department of Life Sciences.....	14
Division of Biosciences.....	14
Division of Psychology.....	20
Division of Sport, Health and Exercise Sciences	24

Department of Clinical Sciences

Division of Occupational Therapy and Community Nursing



Dr Gail Eva (Ageing Studies Theme)

Research interest: Social, psychological and occupational consequences of cancer-related disability; vocational rehabilitation, goal-setting, rehabilitation outcome measures in cancer and palliative care, rehabilitation in neurological cancers, and non-pharmacological interventions for managing cancer-related fatigue.



Prof Priscilla Harries (Ageing Studies Theme)

Research interest: Judgement and decision making; computer decision support; expertise development; mental health, neurology, dyslexia, elder abuse, mixed methods.



Ms Ayana Horton Ifekoya

Research interest: The study of how therapists and patients use intrinsic and extrinsic emotion regulation strategies to build the therapeutic relationship and how the use of these strategies change during the course of the relationship.



Dr Debbie Kramer-Roy

Research interest: Ethnicity and disability, including cultural competence in health care. Religion and the social model of disability. Emancipatory approaches to research, e.g. participatory research and use of creative methods.



Dr Anne McIntyre (Ageing Studies Theme)

Research interest: The effect of ageing upon everyday lives and occupations. Particularly, the impact of falls, dementia and neurological disabilities upon individuals and their families to inform health and social care practice.



Dr Panagiota Nikopoulou-Smyrni

Research interest: Clinical reasoning; clinical decision support systems; assistive and ambient technologies; neurological rehabilitation and applied research.



Ms Anna Pratt (Ageing Studies Theme) (CHPER)

Research interest: Hand assessment/outcomes of hand therapy following reconstruction or traumatic injury; experiences of hand injury/hand disease; reflective practice.



Dr Mellissa Prunty (CCN)

Research Interest: The assessment, intervention and evaluation of motor coordination difficulties in children, particularly those with Developmental Coordination Disorder (DCD). Particularly interested in skill acquisition in handwriting, ball skills and cycling.



Ms Nessie Shia

Research interest: Include mental health promotion and evaluation, inter-professional learning and education and exploration on Chinese women breast health.



Dr Georgia Spiliotopoulou (Ageing Studies Theme) (CHPER)

Research interest: Use of assistive devices to improve quality of life of older people and people with long-term conditions, self-assessment and measuring for provision of assistive devices, validity and reliability of assessment tools, effectiveness of provision of occupational therapy services.

Department of Clinical Sciences

Division of Physiotherapy & Physician Associate



Miss Evelyn Jane Corner (CHPER)

Research interests: Mixed methods, scale development and measurement theory, validation studies, critical care, muscle wasting, eLearning and high fidelity simulation.



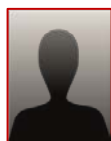
Mr John Cossar

Research interest: Rehabilitation, Behavioural Motor Control, Neurophysiology of Motor Control.



Prof Lorraine De Souza (Ageing Studies Theme)

Research interest: In physical and complex disability, the management and rehabilitation of long term neurological disablement – including multiple sclerosis and spinal pain, and the use of assistive health technologies by people with severe disabilities.



Ms Emma Farquharson

Research Interest: Medial Tibial Stress Syndrome in military personnel looking into prevalence and management of the syndrome



Dr Alex Harvey (CHPER)

Research interests: Physiotherapy management of bronchiectasis, assessment and management of hyperventilation syndrome/dysfunctional breathing and manual/ ventilator hyperinflation in the critically ill population.



Dr Jennifer Jones (CHPER)

Research interests: Non-communicable disease prevention and control with a special interest in cardiovascular prevention and rehabilitation, lifestyle medicine, health-behaviour change and health promotion approaches to cardiovascular health and diabetes prevention.



Dr Mandy Jones (CHPER)

Research interest: Respiratory physiology underpinning and the physiotherapy management of respiratory disease including, dysfunctional breathing in adults and children, rehabilitation of critically ill patients.



Dr Cherry Kilbride (Ageing Studies Theme) (CHPER)

Research interest: Neurorehabilitation with special interests in stroke, physical activity, upper limb recovery, evaluating clinical practice.



Dr Grace Lavelle (Ageing Studies Theme) (CHPER)

Research interest: Exercise immunology and the role of exercise in chronic disease risk management. Exercise interventions for both adult and paediatric clinical populations. Measures of physical activity, physical fitness and sedentary behaviour.



Mr Arturo Lawson (CHPER)

Research interest: Relationship of tendon structure, biomechanics and function in tendinopathy and in at risk populations. Developing clinical objectives measures that can be validated in a lab setting.



Dr Sandra Naylor (Ageing Studies Theme)

Research interest: Widening participation with particular reference to physiotherapy students, older amputees, diabetes and life style choices.



Dr Marika Noorkoiv (CHPER)

Research interest: Research interests: Various ultrasonography methods to study muscle and tendon morphology and function; effect of skeletal muscle structure and mechanical properties on joint and whole body function; importance of joint angle-specificity in physiotherapeutic interventions; knee extension lag; accelerometry applications in clinical populations.



Dr Meriel Norris (Ageing Studies Theme)

Research interest: Neurorehabilitation with special interest in stroke, cultural influences on health understanding and rehabilitation.



Dr Alexander Nowicky (Ageing Studies Theme) (CCN)

Research interest: Neurorehabilitation research using non-invasive brain stimulation techniques to study motor learning, effort perception and fatigue in healthy and neurological populations.



Dr Neil O'Connell (Health Economics Theme)

Research interest: The treatment of chronic low back pain and chronic pain with a focus on novel interventions, evidence based practice and evidence synthesis. He has worked extensively with the Cochrane Collaboration.



Dr Jennifer Ryan (Ageing Studies Theme) (CHPER)

Research interest: The area of physical activity and exercise for people with disability. She is particularly interested in the relationship between physical activity and health, the prevalence of chronic conditions, and interventions to increase physical activity among people with disability.



Ms Alison Sherwin

Research interest: Portfolio use in undergraduate education; personal continuing professional development; public health :exercise and activity participation.



Dr Alyson Warland (Ageing Studies Theme)

Research interest: Neurorehabilitation, with specific interest in upper limb recovery, the use of gaming technology in stroke rehabilitation, telerehabilitation and mental practice. Other interests include HIV and oncology related rehabilitation.



Dr Will Young (Ageing Studies Theme) (CCN) (CHPER)

Research interest: How increased age and neurological disease (particularly Parkinson's) influence motor performance and mobility, with the aim of developing rehabilitation tools using low-cost videogame sensors.

Department of Clinical Sciences

Division of Social Work



Dr Pam Alldred (Welfare, Health and Wellbeing Theme)

Research interest: Social justice issues for children and young people: sexuality equalities work; gendered subjectivities and gender violence; sex and relationship education; teenage motherhood; normative discourses of family and marginalised parents.



Dr Yohai Hakak (Welfare, Health and Wellbeing Theme)

Research interest: Applying qualitative methods including ethnography, in-depth interviews and visual methods and used thematic, narrative and discourse analysis. Areas of research are masculine identities, religious communities, parenting cultures and mental health.



Dr Mike Thomas

Research interest: LGBT families and later life, intersections between public policy and personal life, loneliness in later life, broader challenges facing social work practice.

Department of Clinical Sciences

Division of Health Sciences



Dr Nana Kwame Anokye (Health Economics Theme)

Research Interest: Understanding lifestyle behaviour change particularly around balancing behaviours, Evaluation of public health interventions and the Measurement of short-term outcomes (including costs) of interventions.



Dr Claire Donovan (Health Economics Theme)

Research interest: Theoretical and empirical research on research evaluation and research policy, specifically: the governance of (social) science and humanities research; assessing research impact; higher education policy; evaluation and metrics as technologies of governance; gender and perceptions of academic excellence; assessing the value of culture.



Prof Mary Gilhooly (Ageing Studies Theme)

Research interest: Changes in financial capacity with age and financial elder abuse; impact of posterior cortical atrophy (a form of dementia) on patients and their carers; exposure to radiation from nuclear tests, exposure worry and cognitive functioning in old age; incontinence; legal and ethical issues in ageing societies.



Prof Kenneth James Gilhooly (Ageing Studies Theme)

Research interest: Impacts of a form of Alzheimer's Disease known as Posterior Cortical Atrophy (PCA) on patients and informal carers; financial abuse of elderly people; statistical methods.



Prof Steve Hanney (Health Economics Theme)

Research interest: Identifying and applying ways to extend the HERG Payback Framework for assessing health research impact; the role of health research systems in meeting the grand challenge of improving global health.



Dr Subhash Pokhrel (Health Economics Theme)

Research interest: Return on investment (ROI) analysis in public health; Economic evaluation in healthcare; Analysis of household decision making on healthcare; economics of behaviour change to include tobacco control, breastfeeding support and physical activity promotion.



Ms Jeshika Singh (Health Economics Theme)

Research interest: Measurement and valuation of health outcomes (both methodological and applied research), measurement and valuation of non-health outcomes in healthcare (e.g. safety, convenience), expert elicitation, health technology assessments.



Prof Christina Victor (Ageing Studies Theme)

Research interest: Focused upon the experience of ageing and later with specific reference to: (a) loneliness and isolation; (b) dementia and health; (c) physical activity; (d) minority communities and (e) service evaluation.

Department of Life Sciences

Division of Biosciences



Dr Rhona Anderson (Environment and Health Theme) (CHRC)

Research interest: Explores cellular consequences of radiation-induced damage and includes understanding mechanisms of chromosome exchange formation, genomic instability and immune modulation. Applying this basic knowledge to assess the long-term health risks in exposed individuals.



Dr Alice Baynes (Environment and Health Theme)

Research interest: Sub-lethal effects (developmental, reproductive or immune) of environmental contaminants in aquatic species, developing gastropod molluscs as models in eco-toxicology and comparative biology, and efficacy testing of new wastewater treatment technologies to reduce aquatic pollution.



Dr Emma Bourton

Research interest: DNA Repair; Radiation Biology (specifically radio-sensitivity and radio-resistance in cancer patients/tumours); Chemo-sensitivity and chemo-resistance in cancer patients/tumours.



Dr Joanna Bridger (Ageing Studies Theme) (Synthetic Biology Theme)

Research interest: The Bridger lab studies how the cell nuclear environment influences dynamic genome behaviour in development, differentiation, ageing and disease.



Dr Abdul Chaudhary (Environment and Health Theme)

Research interest: Extensive research experience on the development and optimisation of novel environmental clean-up and clean technologies for removal of both organic and inorganic pollutants from industrial waste streams.



Dr Sibylle Ermler (Environment and Health Theme)

Research interest: Endocrine disruption, carcinogenesis, genotoxicity and DNA damage, mixture toxicology including effect directed analysis to detect toxicity in complex tissue samples, alternatives to animal testing including 3D cell culture models and PBPK modelling.



Dr Amanda Harvey (Environment and Health Theme)

Research Interest: Ecotoxicology. Plastic pollution in the environment and its effects on wildlife and human society. Endocrine disrupting chemicals in the aquatic environment and their effects on fish health. Water quality.



Prof Paul Hellewell

Research interest: Fundamental pathways of leukocyte recruitment in inflammation, an essential prelude for new therapeutic agent development. Focus is on: adhesion molecules, chemoattractants, microvesicles, murine models of disease.



Dr Thomas Hoefken (Environment and Health Theme)

Research interest: The molecular mechanisms of the regulation of fundamental cell biological and biochemical processes using budding yeast as a model organism. These processes include metabolism, cell differentiation and gene expression.



Dr Ashley Houlden

Research Interests: Assessment of microbial communities using high throughput sequencing and molecular microbiological techniques. Focusing on the gastrointestinal microbiome and the identification of functionally important changes in microbial assemblages as a result of disease or injury, and linking them to the interactions between the host and its microbiome.



Ms Teresa Jones (Health Economics Theme)

Research interest: Research evaluation, qualitative citation analysis, translation of health research, assessment of wider impacts of research.



Prof Rakesh Kanda (Environment and Health Theme)

Research interest: Development and application of analytical techniques for the determination of environmental contaminants for assessing animal and human exposure to compounds in the environment. Also concerned in the determination of the occurrence and removal of priority pollutants and emerging hazardous substances in wastewater treatment plants using high resolution LC (or LC/LC) and MS and MS/MS based techniques.



Dr Stephen Kershaw (Environment and Health Theme)

Research interest: Geoscience research into modern and ancient Earth's surface processes. Current topics include mass extinctions, ancient reefs, fossil calcified sponges and corals, travertine; and geohazards affecting resources and vulnerable populations.



Prof Paul Leonard (Environment and Health Theme)

Research interest: Assisting colleagues in the IFE at Brunel with the transfer and fate of pollutants including exposure of the public.



Dr Su-Ling Li

Research interest: To study the mechanism of how the immune system is optimally controlled; Development a novel vaccine strategy to prevent chronic infection diseases such as HIV/HBV and also cancer.



Dr Anne Lockyer (Environment and Health Theme)

Research interest: Functional genomics of interactions of aquatic organisms (snails and fish) with environmental stressors (parasites and pollution), including differential gene expression analyses of developmental, immune and endocrine systems.



Dr Luigi Margiotta-Casaluci (Environment and Health Theme)

Research interest: Translational pharmacology and toxicology; drug safety assessment; chronic inflammation; immune-mediated drug effects; brain health; behavioural disorders; zebrafish model.



Dr Ronan McCarthy

Research Interest: Profiling key signalling pathways that play a role in chronic bacterial infection and antibiotic resistance, studying the interactions that occur at the host-pathogen interface using integrated 'omics approaches. Understanding the protective role of the microbiome in an infection setting and assessing the ability of old drugs to be repurposed to inhibit bacterial infection.



Dr Ansar Pathan

Research interest: Host-pathogen interaction in tuberculosis (TB) with focus on in vitro granuloma formation, improved vaccine and diagnostic test development against TB, screening of endogenous and exogenous agents for anti-microbial activities and characterisation of new M.tb genes.



Dr Mark Pook (Synthetic Biology Theme)

Research interest: Investigating molecular disease mechanisms and therapies for the inherited neurodegenerative disease Friedreich ataxia.



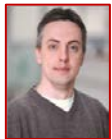
Dr Terry Roberts (Environment and Health Theme)

Research interest: Telomerase repression by human chromosomes and the effect chemotherapeutic drugs have on telomere biology. Anti-cancer drugs derived from the plant genera Annona and their mode of action.



Dr Edwin Routledge (Environment and Health Theme)

Research interest: Protecting wildlife and society from diseases associated with exposure to biological and chemical contaminants in freshwater, such as Schistosomiasis (parasite), Legionella (bacteria) and endocrine disrupting chemicals research.



Dr Christian Rudolph (Synthetic Biology Theme)

Research interest: Focuses on DNA replication, cell cycle control and genomic stability. Currently investigating how termination of DNA replication affects genomic stability and cell cycle progression. Also how DNA damage influences DNA replication and cell cycle control in Escherichia coli.



Dr Tamsin Runnalls (Environment and Health Theme)

Research interest: Sub-lethal effects of human pharmaceuticals (which have been found to be present in the aquatic environment), reproduction in fish (in particular the constituents of the contraceptive pill).



Prof Nigel Saunders (Synthetic Biology Theme)

Research interest: Synthetic Biology of bacteria to address real-world sustainability focussed problems. Engineering of bacteria is based upon knowledge-based design, exploiting genome sequences, novel analysis tools, evolution over time (population biology) and under selection (in the lab). Application areas address use of waste and low-value biomass, petrochemical replacements, antibiotic resistance, and bioremediation.



Mr Martin Scholze (Environment and Health Theme)

Research interest: Statistical and mathematical dose-response modelling, probabilistic risk assessment, experimental design, PBPK modelling, mixture toxicology.



Dr Mark Scrimshaw (Environment and Health Theme)

Research interest: Chemicals in the water cycle, where they come from, and what happens to them when they get there. How understanding this can inform on health outcomes, regulation and control of chemicals



Dr Elisabete Silva (Environment and Health Theme)

Research interest: Endocrine disruption and the impacts of environmental contaminants on human health, specifically breast cancer; mixture toxicology; alternatives to animal testing (including 3D organotypic cell culture models) and the epigenome as a potential target for chemicals in the development of endocrine-related disorders.



Dr Gudrun Stenbeck (Environment and Health Theme)

Research interest: Characterisation of the signalling events relaying extracellular stimuli to the intracellular trafficking machinery to develop new strategies for the treatment of diseases such as osteoarthritis, osteoporosis, fibrotic diseases and cancer.



Prof John Sumpter (Environment and Health Theme)

Research interest: Ecotoxicology; the effects of chemicals present in the environment on freshwater fish; the effects of human pharmaceuticals.



Dr Sabrina Tosi (Environment and Health Theme)

Research interest: Understanding the range of chromosomal abnormalities that occur in leukaemia may be of diagnostic and prognostic relevance, as it allows the classification of patients into high risk or low risk categories, and might subsequently impact on therapy choices.



Dr David Tree (Ageing Studies Theme)

Research interest: We use the fruit fly *Drosophila melanogaster* as a model system to study the genetic, molecular and cell biological mechanisms controlling patterning during embryonic development and the homeostasis of adult tissues and organs.



Dr Anthony Tsolaki

Research interest: The pathogenesis of infectious diseases, mainly focusing on host-pathogen interactions in tuberculosis, with the goal of developing new therapies and vaccines against the disease.



Dr Paola Vagnarelli

Research Interest: My laboratory is interested in understanding how our genomes are stably maintained throughout our lifespan. Chromatin associated protein phosphatases play an essential role in the control of chromatin structure and dynamics both in mitotic and post-mitotic cells. Therefore our aim is to identify phosphatases with essential role in health and diseases."



Dr Ariana Zeka (Environment and Health Theme)

Research interest: Include: population health effects of environmental exposures; climate change and health; study of social and economic determinants of health; evaluation of effect of public policy on population health outcomes; economic, political and societal transitions and population health.

Department of Life Sciences

Division of Psychology



Dr Sofia Barbosa Bouças

Research Interest: Implementation intentions and prospective memory, and, more broadly, human memory and cognitive performance, attention and executive processes, healthy and impaired ageing, cognitively/attention impaired groups, and nutrition and cognition. Also goals, behavioural intentions and planning; commitment, volition, and motivation; and in exploring their roles in behaviour change in health settings and health behaviour promotion, and in adherence.



Dr Rachel Bennetts (CCN)

Research interest: Individual differences in face perception; development of face recognition abilities in childhood and adolescence; techniques to enhance face perception abilities (e.g., cognitive training, oxytocin).



Dr Survjit Cheeta (CCN)

Research interest: Cognitive and reward biases in depression and populations at risk of depression; exploring young people's knowledge of the harms associated the use of legal and illegal drugs.



Dr Terry Dovey (Welfare, Health and Wellbeing Theme)

Research interest: Eating behaviour and appetite regulation, especially eating disorders in young children. Behaviour change in children's eating behaviour and how/why they choose to eat a particular food item, including the manipulation of children's food choices through television advertising as well as towards a healthier diet. Biological and psychophysical underpinning of eating behaviour and drivers of hunger.



Dr Bianca de Haan (CCN)

Research interest: Cognitive (neuro)psychology/neuroscience and visual processing, specifically, the cognitive and anatomical substrates of selective and spatial attention (and how these change through the lifespan or as a function of neurological disease), using behavioural methods, fMRI, TMS, and EEG.



Dr Stanley O. Gaines, Jr. (CCE)

Research interest: A social/personality psychologist whose research interests include inner wellbeing, ethnic identity, and interdependence in close relationships.



Dr Lucia Garrido (CCN)

Research interest: Cognitive neuroscience and visual processing, specifically, object recognition, face recognition, voice recognition and emotion recognition using behavioural methods and neuroimaging.



Dr Toshie Imada (CCE)

Research interest: Cross-cultural examination of cognitive processes/ behavioural reactions, including self-images, cultural values, choice justification, emotion, attention, social facilitation, executive function, prosocial attitudes, as well as cultural products such as children's stories.



Prof Veena Kumari (CCN)

Research Interest: Cognition-emotion interface; mindfulness; neurobiology of cognitive sex differences; sleep deprivation and mental health; neurobiology of violence and addiction; cognitive psychopharmacology, particularly the effects of psychostimulants, antipsychotics, nicotine and anxiolytics; neurobiological effects and predictors of outcome following drug and psychological treatments in mental disorders; and personality neuroscience.



Dr Tara Marshall (CCE)

Research interest: Focuses on romantic relationships: how they are influenced by social media, how they vary across cultures, and how people react to breakups. Also the study of the personality traits that predict Facebook use.



Dr Jacob Munneke (CCN)

Research interest: Visual-attentional control mechanisms. In particular, the interaction between competing attentional control mechanisms responsible for the selection and subsequent processing of visual information from our environment, such that this information gains access to awareness and working memory, thereby influencing our perceptual experience.



Prof Dany Nobus

Research interest: History, Theory and Practice of Psychoanalytic Psychotherapy; Socio-cultural constructions of non-normative sexual behaviour; History of Psychiatry; Psychoanalysis, Philosophy and Epistemology; Psychoanalysis, Literature and Film.



Dr Justin O'Brien (CCN)

Research interest: How our perception of static and dynamic faces and facial expressions changes through the lifespan from infancy to old age. Also, visual neuroscience and developmental disorders, especially autism and dyslexia.



Dr Nicholas Pound (CCE)

Research interest: Male competitiveness, risk-sensitivity, impulsiveness and violence; facial morphology, health and endocrine status; perception of personality in faces; social and psychological influences on male reproductive physiology and sexual behaviour.



Dr Michael E. Price (CCE)

Research interest: Evolutionary social psychology. Origins of moral attitudes, especially about egalitarianism and leader-follower relations. Religiosity: why it evolved, and how it relates to wellbeing and health.



Dr Daniel Roberts

Research Interest: normal and disordered visual cognition and the implications this has on language processing (e.g., word, object, and face recognition). My approach involves behavioural studies of individuals with brain damage, neuroimaging, visual psychophysics, and awake craniotomy. Aims to further our understanding of the patterns of impairment following brain damage, normal cognitive processes, and how this knowledge can inform clinical practice (e.g., rehabilitation and treatment services).



Dr Noam Sagiv (CCN)

Research interest: The cognitive and neural basis of visual perception, multisensory interactions, and synaesthesia; neural correlates of consciousness; neuropsychology of perception; prosopagnosia and other disorders of face perception.



Prof David P. Schmitt (CCE)

Research interest: Evolutionary and cross-cultural approaches to understanding sexual diversity (variations of gender, orientation, reproductive strategy); risk factors for sexual aggression, intimate partner violence, and HIV/AIDS; anti-social personality traits such as Machiavellianism, narcissism, and psychopathy.



Dr Achim Schuetzwohl (CCE)

Research interest: Psychological aspects of mechanisms underlying the emotions of surprise and jealousy.



Dr André J. Szameitat (CCN)

Research interest: Work mainly falls into the fields of Cognitive Neuroscience, Cognitive Psychology, and Neuropsychology. Main interests lie in multitasking, working memory, executive control, and the functionality of the lateral prefrontal cortex, using behavioural measures as well as fMRI.



Dr Adrian Williams (CCN)

Research interest: Broadly in the area of sensory perception, but with a focus on the visual system. Using neuroimaging techniques like fMRI, I investigate how the brain's anatomy and function facilitates sensory processing.



Prof Michael Wright (CCN)

Research interest: The use of fMRI, MRS, EEG, psychophysical and behavioural experiments to analyse perceptual skills: currently focusing on action prediction in sport, and the perception of changing emotional facial expressions.



Prof Taeko Wydell (CCN)

Research interest: Cognitive/neural processes of visual language in different writing systems with normal and dyslexic readers using cognitive behavioural and neuroimaging (EEG, MEG, fMRI) research methods.

Department of Life Sciences

Division of Sport, Health and Exercise Sciences



Dr Daniel Bishop (Ageing Studies Theme) (CCN)

Research interest: Focuses on the use of visual and auditory guidance to maximise people's visual information pickup, to enhance their interaction with the environment during complex motor tasks. His research group is using eye tracking, neuroimaging and statistical modelling techniques accordingly.



Dr Richard Blair

Research interest: Understanding the cultural, social, ethical, pedagogical and methodological challenges for adults (teachers, coaches and volunteers) who work in Physical Education, Physical Activity and Youth Sport settings. How adults working in these settings support children to become physical literate and educated.



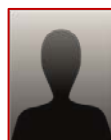
Dr David Broadbent (CCN)

Research interest: Examining the characteristics which underpin expert performance in a range of domains with regards to motor and perceptual-cognitive skills and also the psychological attributes which underpin expertise such as performance under pressure. We use a variety of measures and techniques such as eye-tracking technology, video simulations, questionnaires, performance analysis, neuroscientific measures, and behavioural responses.



Prof Susan Capel

Research interest: the effective teaching of physical education; the development of student and newly qualified physical education teachers; the development of physical education teachers knowledge for teaching; mentoring of beginning physical education teachers.



Dr Adam Cocks (CCN)

Research interest: Understanding fall-risk and fall prevention in older adult and clinical populations. Specifically, the extent to which psychological factors (e.g., anxiety and fear of falling) influence the control of gait, posture, and visual attention.



Dr Misia Gervis

Research interest: Issues relating to child athlete welfare within sport, explicitly exploring emotional abuse and mental toughness; understanding eating disorders and disordered eating in elite athletes; implementation of positive psychological principles to enhance emotional resilience in young athletes.



Dr Oliver Gibson (CHPER)

Research interest: Acute and chronic physiological and cellular responses to heat and/or hypoxic stress. Specifically the role acclimation to environmental stressors can have on subsequent exercise performance. In addition to using the acclimation model to improve exercise performance, future work is intent on quantifying the role environmental stress can have on markers of metabolism in clinical populations.



Dr Vassil Girginov (Welfare, Health and Wellbeing Theme)

Research interest: Publications and industry experience are in the field of Olympic movement, sport development, knowledge creation and transfer, culture of sport management and policy analysis.



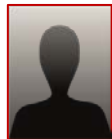
Dr Richard Godfrey (CHPER)

Research interest: Neuromuscular diseases and the role of exercise, exercise in cardiac prevention and rehabilitation, exercise and health, exercise and sports performance, growth hormone in sport health and exercise.



Prof José González-Alonso (CHPER)

Research interest: Understanding (1) the physiological limitations to athletic performance and exercise tolerance, particularly the functional capacities of human muscles, heart and brain, and (2) the regulation of tissue blood flow during exercise and environmental stress and the implications for human performance and the treatment of peripheral vascular disease.



Dr Laura Hills (Welfare, Health and Wellbeing Theme)

Research interest: Employs sociological theory to understanding young people, sport and social inclusion with a particular interest in gender and social disadvantage. In addition, she has an interest in media and qualitative research methods.



Ms Sara Horne (CHPER)

Research interest: Involve the analysis of movement to enhance performance and minimise injury in a team and individual sports. Specifically the use of both biomechanical measurement techniques to assess the effects of different footwear conditions in walking and running and performance analysis methods to assess technical and tactical performance.



Dr Costas Karageorghis (CCN)

Research interest: Psychological, psychophysical and ergogenic effects of music in the domain of exercise and sport. Using a broad range of scientific approaches and methodologies. Development of conceptual frameworks and grounded theory, the production and validation of measurement tools, laboratory-based experimentation (e.g. psychometric, EEG, fMRI, respiratory), and in vivo studies.



Prof Tess Kay (Welfare, Health and Wellbeing Theme)

Research interest: Conducts social science researching into sport, health and social justice. She works closely with policymakers and providers on research and evaluation studies of inequalities and diversity in sport and health in the UK and in international development contexts.



Dr Charlotte Kerner

Research interest: Young people's experiences of physical activity and physical education and the role of schools in promoting well-being. Relationships between physical activity, physical education, motivation and body image. The social, motivational and pedagogical use of technology (e.g. social media, wearable technology) with children and adolescents.



Dr Pascale Kippelen (CHPER)

Research interest: Understanding of the pathophysiology of respiratory disorders in athletes, in particular asthma and exercise-induced bronchoconstriction. She has wide expertise in pulmonary function testing, exercise testing and bronchial provocation challenges.



Dr Nicholas Linthorne (CHPER)

Research interest: Application of physics and mathematics to the understanding of human movement. My main areas of research include running, jumping, throwing, and kicking.



Dr Louise Mansfield (Welfare, Health and Wellbeing Theme)

Research interest: Focuses on social diversity, sport, health and wellbeing. Particular interest in gender inequalities and the contribution of sport to public health. A qualitative researcher with experience of working in mixed methods and multidisciplinary teams.



Dr Amir A Mohagheghi (Biomedical Engineering Theme) (CHPER)

Research interest: Motor impairments in Cerebral Palsy and Stroke. I investigate the association between mechanical properties of muscle-tendon units and function in these populations with the goal of developing new rehabilitation interventions for improving function.



Dr Daniel Rhind (Welfare, Health and Wellbeing Theme)

Research interest: Safeguarding and integrity associated with sport. This includes safeguarding in sport (e.g., athletes), around sport (e.g., mega sports events) and through sport (e.g., developing life skills).



Dr Lee Romer (Ageing Studies Theme) (CHPER)

Research interest: Cardiorespiratory responses, interactions and limitations to exercise in health, disease and disability.



Dr Aliah Shaheen

Research interest: Using experimental and computational biomechanical techniques to understand the role of morphological and movement variability on function. With applications in shoulder and upper limb rehabilitation, active ageing and animal health.

College of Health and Life Sciences

Index

College Research Centres

Centre for Human performance (CHPER)

Miss Evelyn Jane Corner, 7

Dr Oliver Gibson, 25

Dr Richard Godfrey, 25

Prof José González-Alonso (Centre Director), 25

Dr Alex Harvey, 7

Ms Sara Horne, 26

Dr Jennifer Jones, 8

Dr Mandy Jones, 8

Dr Cherry Kilbride, 8

Dr Pascale Kippelen, 26

Dr Grace Lavelle, 8

Mr Arturo Lawson, 8

Dr Nicholas Linthorne, 26

Dr Amir A Mohagheghi, 27

Dr Marika Noorkoiv, 9

Ms Anna Pratt, 6

Dr Lee Romer, 27

Dr Jennifer Ryan, 10

Dr Georgia Spiliotopoulou, 6

Dr Will Young, 10

Centre For Culture and Evolution (CCE)

Dr Stanley Gaines, 21
Dr Toshie Imada, 21
Dr Tara Marshall, 21
Dr Nicholas Pound, 22
Dr Michael E. Price, 22
Dr Achim Schuetzwohl, 23
Dr David P Schmitt, (Centre Director), 23

Centre for Cognitive Neuroscience (CCN)

Dr Rachel Bennetts, 20
Dr Daniel Bishop, 24
Dr David Broadbent, 24
Dr Bianca De Haan, 20
Dr Surjit Cheeta, 20
Dr Adam Cocks, 20
Dr Lucia Garrido, 21
Dr Costas Karageorghis, 26
Prof Veena Kumari, (Centre Director), 21
Dr Jacob Munneke, 21
Dr Alexander Nowicky, 9
Dr Justin O'Brien, 22
Dr Mellissa Prunty, 6
Dr Noam Sagiv, 22
Dr André J. Szameitat, 23
Dr Adrian Williams, 23

Dr Michael Wright, 23
Prof Taeko Wydell, 23
Dr Will Young, 10

Research Institute Themes

Ageing Studies Theme

Dr Daniel Bishop, 24
Dr Joanna Bridger, 14
Prof Lorraine De Souza, 7
Dr Gail Eva, 5
Prof Kenneth James Gilhooly, 12
Prof Mary Gilhooly, 12
Prof Priscilla Harries, 5
Dr Cherry Kilbride, 8
Dr Grace Lavelle, 8
Dr Anne McIntyre, 5
Dr Sandra Naylor, 9
Dr Meriel Norris, 9
Dr Alexander Nowicky, 9
Ms Anna Pratt, 6
Dr Lee Romer, 27
Dr Jennifer Ryan, 10
Dr Georgia Spiliotopoulou, 6
Dr David Tree, 19
Prof Christina Victor, 13
Ms Alyson Warland, 10
Dr Will Young, 10

Environment and Health Theme

Dr Rhona Anderson, 14
Dr Alice Baynes, 14
Dr Abdul Chaudhary, 14
Dr Sibylle Ermler, 14
Dr Amanda Harvey, 15
Dr Thomas Hoefken, 15
Prof Rakesh Kanda, 15
Dr Stephen Kershaw, 16
Prof Paul Leonard, 16
Dr Anne Lockyer, 16
Dr Luigi Margiotta-Casaluci, 16
Dr Terry Roberts, 17
Dr Edwin Routledge, 17
Dr Tamsin Runnalls, 17
Mr Martin Scholze, 18
Dr Mark Scrimshaw, 18
Dr Elisabete Silva, 18
Dr Gudrun Stenbeck, 18
Prof John Sumpter, 19
Dr Ariana Zeka, 19

Health Economics Theme

Dr Nana Kwame Anokye, 12

Dr Claire Donovan, 12

Prof Steve Hanney, 13

Dr Teresa Jones, 15

Dr Neil O'Connell, 9

Dr Subhash Pokhrel, 13

Ms Jeshika Singh, 13

Synthetic Biology Theme

Dr Joanna Bridger, 14

Dr Mark Pook, 17

Dr Christian Rudolph, 17

Prof Nigel Sunders, 18

Welfare, Health and Wellbeing Theme

Dr Pam Alldred, 11

Dr Terry Dovey, 20

Dr Yohai Hakak, 11

Dr Laura Hills, 25

Prof Tess Kay, 26

Dr Louise Mansfield, 27

Dr Daniel Rhind, 27